



PPFI SUPPORT PROJECT

Information Session for Students *New Scholarship Program*

04th of December, 2023





PPFI SUPPORT PROJECT

PART 1

OPENING



INTRODUCTION

PPFI

Mrs. Nihad YOUNIS

General Director

A. Presentation of the PFFI support project funding this scholarship

B. Presentation of the Master's Degree and University part of this scholarship program

C. Explication of the application process and selection criteria

C. Logistical aspects and presentation of Campus France support



PPFI SUPPORT PROJECT

PART 2 - PRESENTATION OF THE PPFI SUPPORT PROJECT

Lyse Marques, project manager at Expertise France



Overall Objective

- Broaden the PFFI impact beyond the Palestinian administration, in order to pursue raising awareness of public financial management issues among other sectors including the private sector and civil society, with a strong relationship to be built with Palestinian Academia

Specific Objectives

- SO1: Support PFM reforms and related institutional changes, including gender integrated approach
- SO2: Ensure competencies and capacities of PFM actors with vocational trainings and academic curricula



Component 1 - Support the implementation and the development of strategic reforms related to Public Finance Management, including gender mainstreaming



Component 2 - Strengthen vocational trainings and academic curricula related to Public Finance Management



Component 3 - Enhance the Palestinian Public Finance Institute as a PFM Centre of Excellence



PPFI SUPPORT PROJECT

PART 3 - PRESENTATION OF THE MASTER'S DEGREE AND UNIVERSITY PART OF THIS SCHOLARSHIP PROGRAM

*Claudine Belot, International programmes and services coordinator of the
Economy School at the University of Clermont Auvergne*



The **University of Clermont Auvergne**:

- A multi-disciplinary higher education institution centered on five major fields
- 36,000 students, 1,300 professors and researchers, 47 research centers ;
- Regularly ranked amongst the best French Universities ;
- Located in a human-sized city and natural setting, at crossroads of Europe, it offers great conditions for study and personal life.



A central position in Europe... and in France



A dynamic economy

Some big company names

Michelin, Limagrain,

Volvic, IBM...

Sectors with international reach

Logistics and transports,

Mechanics, Biotechnology,

Food industries...



Presentation of the University



The School of Economics - **CERDI** :

- First French faculty dedicated to **development economics** ;
- Brings together economists, researchers from the **CNRS**, the **IRD** and teacher-researchers from the **University of Clermont Auvergne** ;
- Field of expertise: microeconomic and macroeconomic aspects of development, including public finance ;
- CERDI : Important research training center: **70+ doctoral students** ;
- Excellency center: awarded the “Laboratory of Excellence” label for the "Initiative for Development and Global Governance" project (Labex IDGM +), granted by the Ministry of Finance as “International Development Clermont Hub”



Master 2 of DEVELOPMENT ECONOMICS at CERDI

Development Economics Program Year 2 :

Objectives:

- Offering a broad vision of economic development issues
- Learning to use the standard operational tools of economic analysis (statistics and econometrics approaches)
- Being able to adapt the analysis to the specific context of each country
- Examining market imperfections, inequality, and poverty
- Combining macro and micro-analysis, and considering short term, as long-term issues

Teaching language : English



Presentation of the selected Master's degree (2/3)

Semester 1

- International development
- Economic analysis
- Quantitative techniques

Semester 2

- Economic theory and policy
- Economics of development
- Sustainable development
- Quantitative methods

**Common with
an ERASMUS
MUNDUS
Program**

Semester 3

- International development
- Sustainable development
- Quantitative techniques

Semester 4

- Internship with report or Master thesis

*It
corresponds
to the year 2
of Master
that you
would
integrate*

Presentation of the Selected Master's Degree (3/3)

		Semester 3 - Teaching Units	Total (hrs)	ECTS
Master 2 Semester 3		TU 1: International Development	78	12
		Development Macroeconomics	18	3
		Trade policies and economic growth	18	3
		Poverty and development	21	3
		Financing development 2	21	3
		TU 2: Sustainable development	66	9
		Principles of natural resources economics	21	2
		Sustainable development economics 3	10	1.5
		Environmental economics	11	2
		Climate change economics	12	1.5
		Global health economics	12	2
		TU 3: Quantitative techniques	66	9
		Economic policy evaluation	21	3
		Macroeconomic modelling (DGSE)	15	2
		Macroeconometrics	18	3
	TOTAL	165	30	
		Semester 4		ECTS
M2 S4		TU 4: practical application		30
		Internship (minimum 3 months up to 6 months) + defense		30



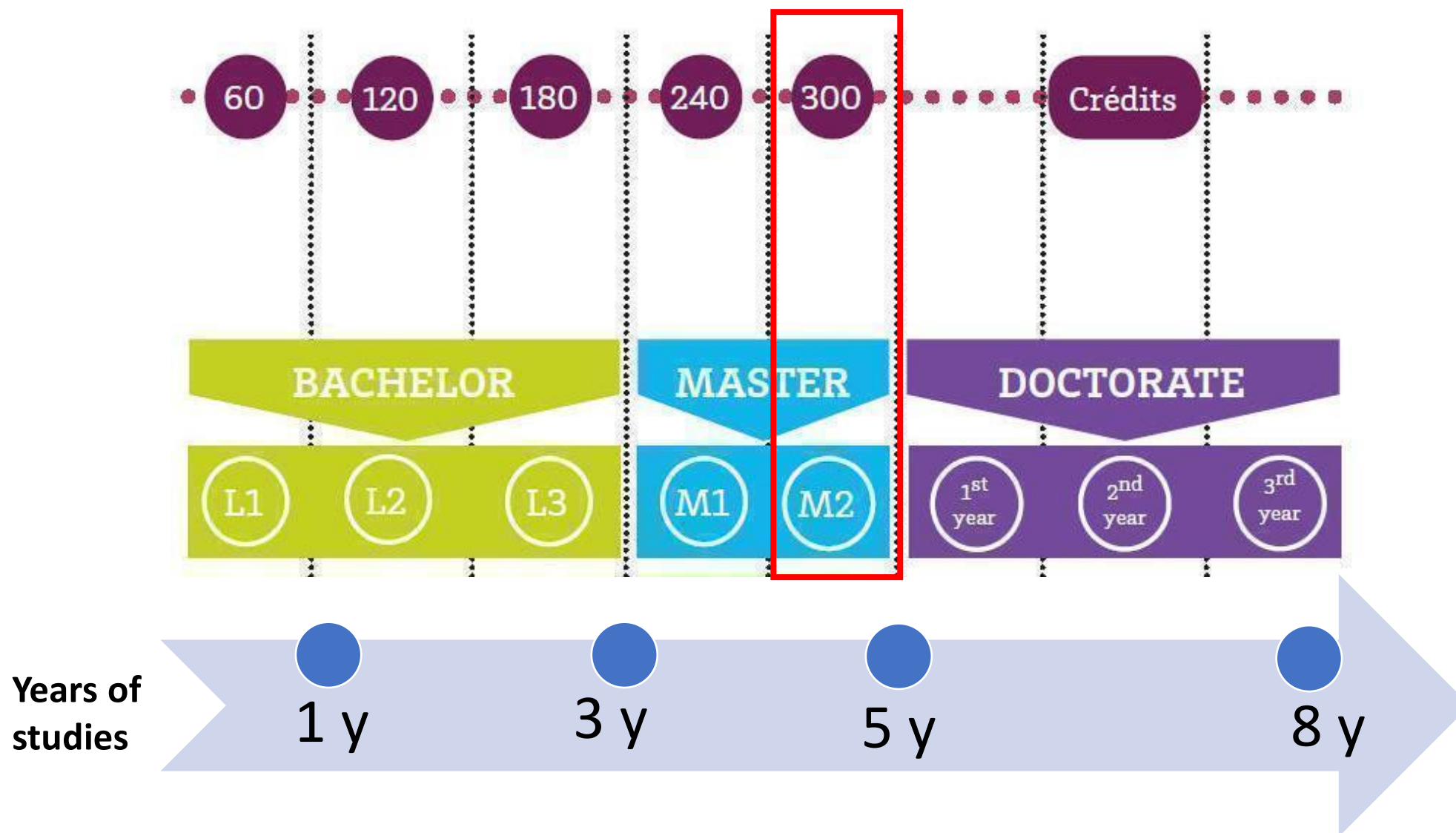
PPFI SUPPORT PROJECT

EXPLICATION OF THE APPLICATION PROCESS AND SELECTION CRITERIA

Lyse Marques, project manager at Expertise France

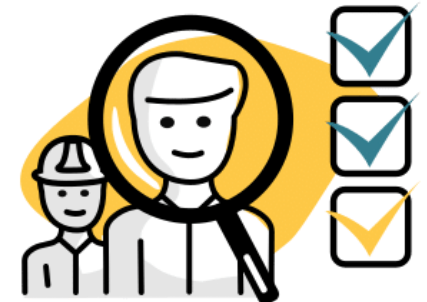


Presentation of the French Higher Education System



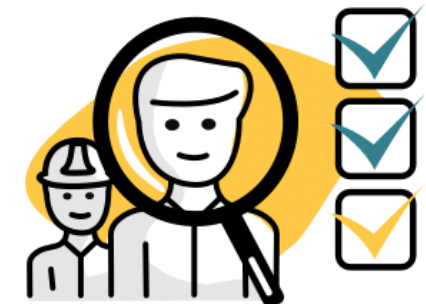
Entry Requirements for the Master's degree

- Being part of an economics, finances and accounting faculties ;
- Knowledge of calculus, quantitative analysis and statistics ;
- Fresh graduates of a Bachelor degree or expected to be graduated within the academic year 2023-2024 (240 ECTS for European students, and the equivalent for non Europeans) – **you need to prove 4 years of studies or equivalent** ;
- English Language Requirements :
 - Being a native English Speaker
 - Or Studying a university program in English
 - Or holding an English language qualification to the right level :
 - IELTS: 6.5,
 - TOEFL IBT : 79,
 - Cambridge English advanced certificate, grade B,
 - TOEIC : 900 (or equivalent).



Selection Criteria for the Scholarship Program

- Assessment by a committee of faculty members of the School of Economics & Expertise France & the French Consulate in Jerusalem & PFFI team ;
- Based on academic merit (the relevance of the degree/courses studied and overall grades), motivation and recommendations, curriculum vitae and language skills ;
- Professional project must be in line with the objectives of the master's degree and the PFFI project (especially link with public finance career path).
- The candidate should be willing to integrate PFFI after its scholarship for an internship up to 3 months.



Timelines and Application Process

**Beginning of
December 2023:**
first information
session & opening
of the applications

31/01/2024: End
of the application
period

Mid - march 2024:
interview of the
short listed
candidates by a
committee of
selection
composed of PPFi,
EF & the French
Consulate of
Jerusalem

**Beginning of
January 2024:** 2nd
information session

**Mid of February
2024:** Committee
of faculty members
of the School of
Economic -CERDI
select eligible
candidates

End of march 2024:
final decision &
answer given to all
candidates

How to Apply to the Scholarship Program ?

- Go to the Master's degree webpage to the Application section and download the application file : <https://economie.uca.fr/formation/master/master-economie-du-developpement-parc-development-economics>
- Please fill in the application and e-mail it with the required documents to claudine.belot@uca.fr ; **in copy you should add lyse.marques@expertisefrance.fr and universitaire@consulfrance-jerusalem.org to make sure you are applying at the same time to the Master's degree and to the Scholarship program.**
- You should make sure you application include:
 - An updated CV
 - Letter(s) of recommendation
 - A letter of motivation
 - ID Copy
 - Diplomas copies
 - Transcripts of records of each year of studies
 - Copies of your language tests scores
 - Proof of 4 years of graduate studies or equivalent (if you are soon to be graduated you need a letter from your university to prove it).**
- The application deadline for the Scholarship Program is : **31/01/2024** (different to the Master's degree deadline)





PPFI SUPPORT PROJECT

LOGISTICAL ASPECTS AND CAMPUS FRANCE SUPPORT

Maud Briard, *University and Institutional Cooperation Attaché at the
Consulate General of France in Jerusalem*



What does the scholarship covers exactly ?

University full
fees



Living cost &
support to find
accomodation

Flight and train
cost



Visa cost, except
Aramex fees



Social security

Educational
follow-up



Campus France Jérusalem

Save the date – webinars about
France Excellence scholarships
Tuesday 5th & Thursday 7th December
Register now: forms.gle/gQpPTAsGczWtLiUr9

Find all calls for scholarships at Master & PhD
level on linktr.ee/campus_francejerusalem

Prepare yourself! www.campusfrance.org/en





PPFI SUPPORT PROJECT

Questions ?

شكرا جزيلاً

